

FAMILY

MISSOURI

MARSHFIELD

SOUTHWEST

Churchill Apartments

664 Church Street, Marshfield, MO 65706

Office: 417.630.0203 | **Fax:** 417. 630.0205

Email: churchill@wilhoitproperties.com



OVERVIEW

Home Type: Apartment

Bedrooms: 2–3

Bathrooms: 2

Other: 0 Garage

Size: 962–1155 ft²

Built In: 2014

Property Description

Churchill Apartments is a 48 unit community set in the heart of the Ozarks, in Marshfield, Missouri. The community features a library with computer stations, community garden, fitness center, clubhouse, playground, tot lot and off-street parking. The apartment homes include living area, dining, walk-in closet, storage, washer and dryers and kitchen appliances. Call to see your new home today.

Schools

District: Marshfield School District

Hubble Elementary

Webster Elementary

Shook Elementary

Marshfield Junior High

Marshfield High School

AMENITIES

Units:

Ceiling Fans

Dishwasher

Microwave

Oversized Closets

High Speed Internet Available

Full-Size Washer & Dryer Included

Extra Storage

Property:

Clubhouse

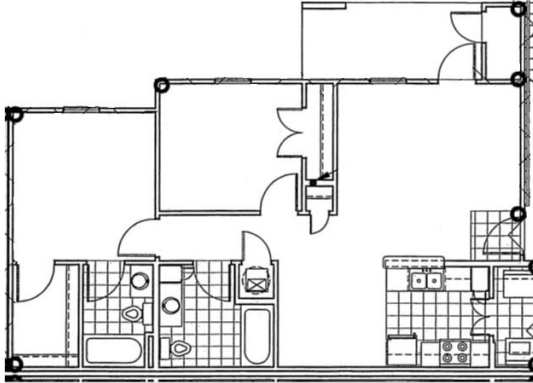
Fitness Center

CONNECT WITH US

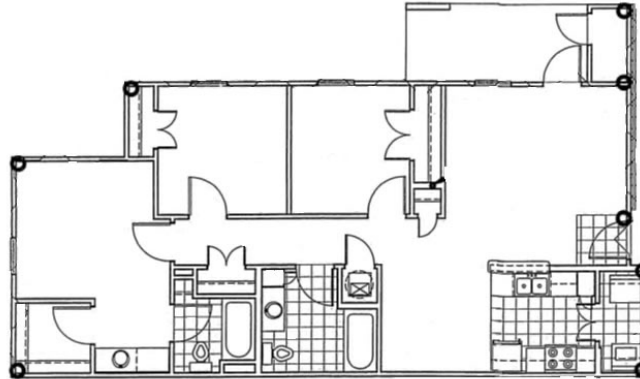


FLOOR PLANS

2 Bedroom



3 Bedroom



OWNERSHIP & PARTNERS

Developer



Property Manager



Construction Management



Other Partners:

Churchill Housing LLC, Missouri Investment Partners XI, Raymond James Tax Credit Fund

CREDIT CARD PAYMENTS

The following credit cards are accepted forms of rent payment in the Residential Portal.

