

FAMILY

OKLAHOMA

PONCA CITY

SOUTHWEST

Copper Ridge Apartments

1515 West Highland Ave, Ponca City, OK 74601

Office: 580-762-3178 | **Fax:** 580-762-1234

Email: copperridge@wilhoitproperties.com



OVERVIEW

Home Type: Apartment

Bedrooms: 1–3

Bathrooms: 2

Other: 0 Garage

Size: 745–1147 ft²

Built In: 2001

Property Description

The secret is out! Copper Ridge LOVES their residents. The family friendly community is set in the western part of Ponca City Oklahoma. Residents can be seen relaxing, playing and socializing at the children's playground and picnic area with bbq grills. The apartments in this community participate in The Housing Choice Voucher Program designed to maintain affordable housing for residents. We'd love to show you around, please call us today.

Schools

District: Ponca City Public Schools

Lincoln Elementary School

West Middle School

Ponca City Senior High School

AMENITIES

Units:

Unique Floor Plan Designs
Full-Size Washer & Dryer Hookups
Pass-Through Serving Bar
Designer Countertops
Double Kitchen Sink with Disposal

Property:

24-Hour Emergency Maintenance
Picnic Area with BBQ Grills
Children's Playground
Fully Equipped Laundry Center

CONNECT WITH US



@Wilhoit.Properties



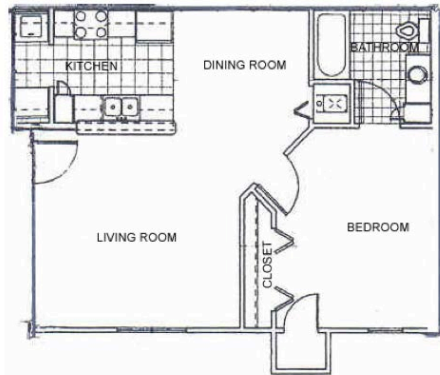
Wilhoit Properties, Inc.



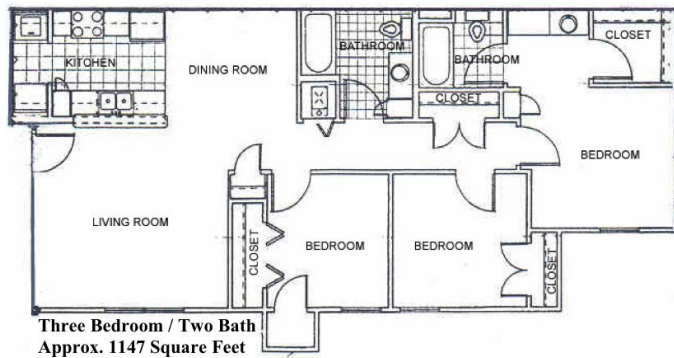
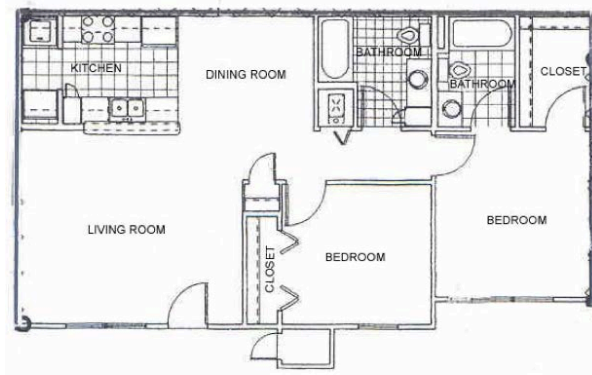
Wilhoit Properties

FLOOR PLANS

1 Bedroom: 745 ft²



2 Bedroom: 984 ft²



3 Bedroom: 1147 ft²

Three Bedroom / Two Bath
Approx. 1147 Square Feet

OWNERSHIP & PARTNERS

Developer



Property Manager



Construction Management



Other Partners:

Oklahoma Housing Finance Agency & Great Southern Bank

CREDIT CARD PAYMENTS

The following credit cards are accepted forms of rent payment in the Residential Portal.

