

FAMILY

TEXAS

LEVELLAND

SOUTHWEST

Deer Creek Apartments

701 Martin Luther King, Levelland, TX 79336

Phone: 806-894-9600 | Fax: 806-894-9602

wiru mm l mmt ruqyr y m rm lyw



OVERVIEW

Home Type: Single Family

Bedrooms: 1–3

Bathrooms: 1–2

Other: 0 Garage

Built In: 2008

Property Description

Welcome To Deer Creek! Our family friendly community features 1, 2 & 3 bedroom layouts, fully equipped kitchens, ceiling fans, washer and dryer hookups, and spacious floor plans, each unit also has private balcony/ patio with storage. The residents can enjoy the children's playground, tot lot and on property laundry facility. Program Qualifications - The apartments in this community participate in The Housing Choice Program designed to maintain affordable housing for residents. Income limits apply to all households. Call today to set up your private showing.

Schools

District: Levelland Independent School

Academic Beginnings Center (PreK-K)

Levelland Elementary (1-3)

Levelland Intermediate School (4-5)

Levelland Middle School (6-8)

Levelland High School (9-12)

AMENITIES

Units:

Unique Floor Plan Designs

Walk-In Closets (2 & 3 Bedroom Floor Plans)

Designer Kitchens with Whirlpool Appliances

Ceiling Fans

Washer & Dryer Connection

Private Patio/Balcony with Exterior Storage Closet

Property:

Community Fitness Center

Picnic Area w/ BBQ Grills

Playground & Tot Lot

On-site Laundry Facility

Pet Friendly

CONNECT WITH US



@Wilhoit.Properties



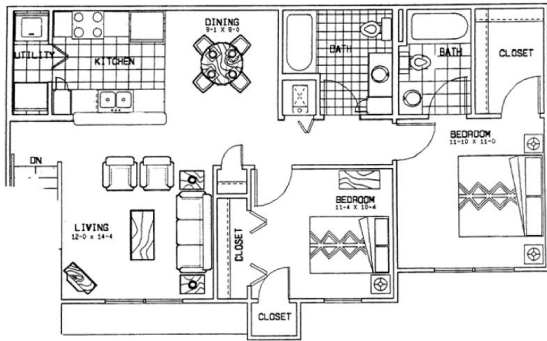
Wilhoit Properties, Inc.



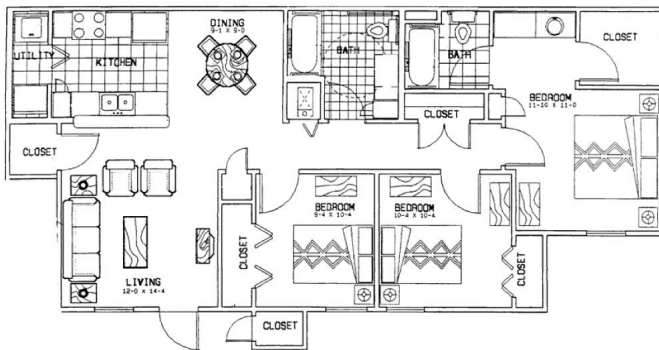
Wilhoit Properties

FLOOR PLANS

2 Bedroom



3 Bedroom



OWNERSHIP & PARTNERS

Developer



Property Manager



Construction Management



Other Partners:

Texas Department of Housing and Community Affairs, Alliant Capital,
Lancaster Pollard Mortgage Company, United States Department of Agriculture Rural Development

CREDIT CARD PAYMENTS

The following credit cards are accepted forms of rent payment in the Residential Portal.

