

FAMILY

MISSOURI

NIXA

SOUTHWEST

The Terraces at Copper Leaf

300 East Peachtree Drive, Nixa, MO 65714

Office: 417.725.3862 | Fax: 417.725.4937

Email: terracescopperleaf@wilhoitproperties.com



OVERVIEW

Home Type: Apartments

Bedrooms: 1–3

Bathrooms: 1–2

Size: 709–1265 ft²

Built In: 2012

Property Description

The Terraces at Copperleaf ...Nixa's finest in Apartment Living. Home is where the HEART is and The Terraces at Copper Leaf has a HOME that will fit your STYLE and PRICE. With AFFORDABLE rent and energy efficient utility cost, we have the PRICE to keep you in STYLE. We're a wonderful new living experience in Nixa. All electric living with large patios or balconies plus water, sewer and trash are paid. Enjoy our picnic area, our billiard room, fitness center and club room.

Schools

District: Nixa Public Schools

High Pointe Elementary School

Inman Middle School

Nixa High School

AMENITIES

Units:

Unique Floor Plan Designs

Built-In Microwave

Self-Cleaning Oven

Refrigerator with Ice Maker

Walk-In Closets

Ceramic Tile

Patio/Balcony with Exterior Storage Unit

Full-Size Washer & Dryer INCLUDED

Property

24-Hour Emergency Maintenance

Fitness Center

Sparkling Swimming Pool

Computer Room

Picnic Area with BBQ Grills

CONNECT WITH US

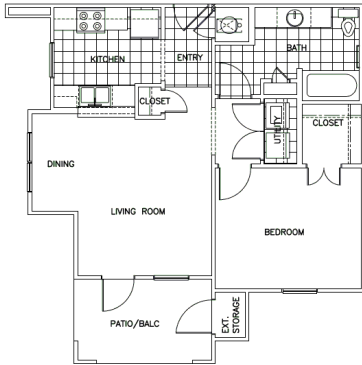
@Wilhoit.Properties

Wilhoit Properties, Inc.

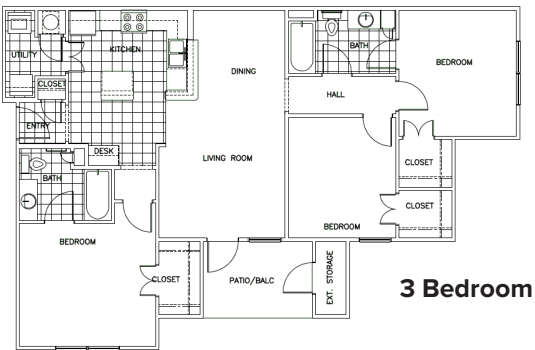
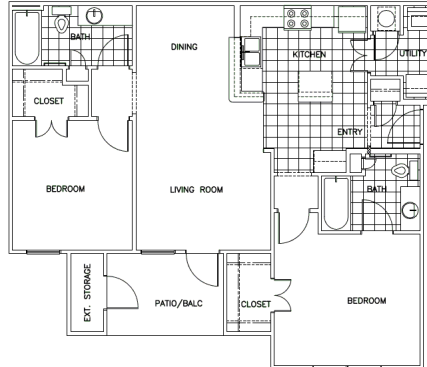
Wilhoit Properties

FLOOR PLANS

1 Bedroom



2 Bedroom



OWNERSHIP & PARTNERS

Developer



Property Manager



Construction Management



Other Partners:

Missouri Housing Development Commission & Centerline Capital

CREDIT CARD PAYMENTS

The following credit cards are accepted forms of Rent Payment in the resident portal.

