

SENIOR

MISSOURI

NIXA

SOUTHWEST

## The Villas at Copper Leaf

305 East Peachtree Drive, Nixa, MO 65714

Office: 417.725.8416 | Fax: 417.724.9398

Email: villascopperleaf@wilhoitproperties.com



### OVERVIEW

**Home Type:** Apartment

**Bedrooms:** 1–2

**Bathrooms:** 1–2

**Size:** 711-958 ft<sup>2</sup>

**Built In:** 2006

#### Property Description

Villas at Copper Leaf is a beautiful community located in Nixa Missouri for Seniors 55+. The property features unique floor plan designs, restricted entry, private patio or balcony, elevator, fitness center, billiards room and social center with planned activities. Let us show you Wilhoit Living at its finest.

#### Schools

**District:** Nixa Public School District

High Pointe Elementary

Inman Middle School

Nixa High School

### AMENITIES

#### Units:

Unique Floor Plan Designs & Restricted Entry

Built-In Microwave & Self-Cleaning Oven

Ceramic Tile

Refrigerator with Ice Maker

Patios or Balcony with Storage

Full-Size Washer & Dryer INCLUDED

#### Property:

Elevator, Cardio Fitness Center & Also Pet Friendly

24-Hour Emergency Maintenance

Billiards Room & Social Center with Kitchen

Picnic Area with BBQ Grills & Tables

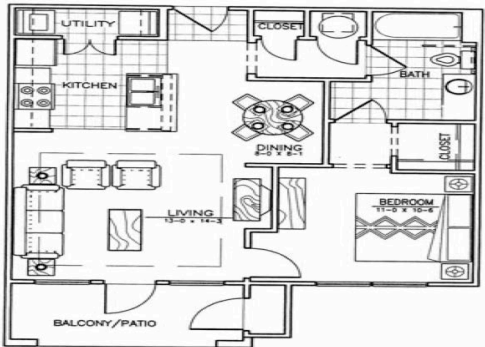
Planned Activities with Bingo

### CONNECT WITH US



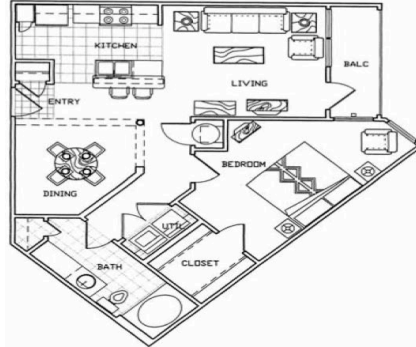
## FLOOR PLANS

**1 Bedroom: 711 ft<sup>2</sup>**

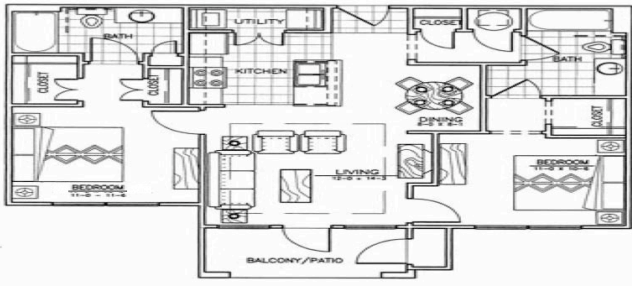


**One Bedroom / One Bath 711 Square Feet**

**1 Bedroom: 806 ft<sup>2</sup>**



**One Bedroom / One Bath 806 Square Feet**



**Two Bedroom / Two Bath 958 Square Feet**

**2 Bedroom: 958 ft<sup>2</sup>**

## OWNERSHIP & PARTNERS

Developer



Property Manager



Construction Management



**Other Partners:**

MO Housing Development Commission, Centerline Capital

## CREDIT CARD PAYMENTS

The following credit cards are accepted forms of Rent Payment in the resident portal.

