

FAMILY

KANSAS

WELLINGTON

SOUTHWEST

## Wedgewood Apartments

900 N Woodlawn Street, Wellington, KS 67152

Office: 620.359.1144 | Fax: 620.359.1609

Email: wedgewood@wilhoitproperties.com



### OVERVIEW

**Home Type:** Apartment

**Bedrooms:** 2–3

**Bathrooms:** 2

**Other:** 0 Garage

**Size:** 1033–1188 ft<sup>2</sup>

**Built In:** 2016

#### Property Description

Welcome to Wedgewood Apartments in Wellington, Kansas. Our family friendly 40-unit community was designed to provide modern housing alternatives at affordable rents and participate in The Housing Choice Voucher Program.

#### Schools

**District:** Wellington USD #353

Wellington Elementary School

Wellington Middle School

Wellington High School

### AMENITIES

#### Units:

Unique Floor plan designs

Refrigerator with ice maker

Self-Cleaning Oven

Full-size Washer & Dryer included

Ceiling Fans & Spacious Closets

Patio/Balcony with exterior storage unit

#### Property:

24-Hour Emergency Maintenance

Playground with Tot Lot

Clubhouse

Fitness Center

Water & Trash Included

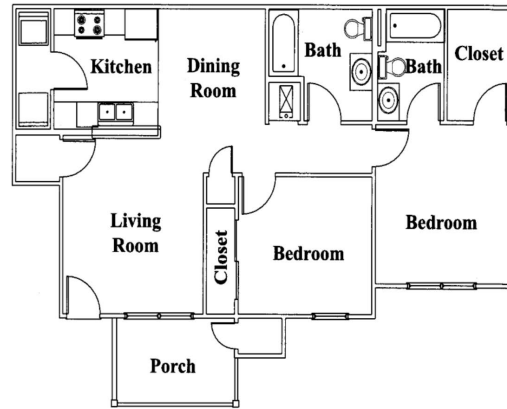
### CONNECT WITH US



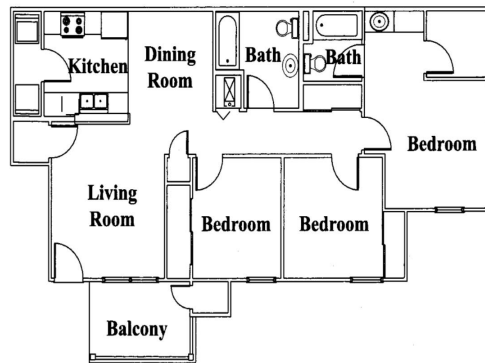
## FLOOR PLANS

---

**2 Bedroom: 1033 ft<sup>2</sup>**



**3 Bedroom: 1188 ft<sup>2</sup>**



## OWNERSHIP & PARTNERS

---

Developer



Property Manager



Construction Management



## CREDIT CARD PAYMENTS

---

The following credit cards are accepted forms of Rent Payment.

