

SENIOR

MISSOURI

RAYMORE

SOUTHWEST

Briar Creek Villas

205 Cunningham Parkway, Belton, MO 64012

Office: 816.331.1270 | **Fax:** 816.331.1536

Email: briarcreek@wilhoitproperties.com



OVERVIEW

Home Type: Apartments

Bedrooms: 1–2

Bathrooms: 1–2

Other: Elevators

Size: 751–1023 ft²

Built In: 2016

Property Description

Briar Creek Villas is a 48 unit senior community with a great location near the Cedar Tree shopping center, Memorial Park, Wal-Mart, great schools and restaurants. One and two-bedroom layouts are available with generous closets, private patios, additional storage, on-site parking and lawn maintenance.

Schools

District: Raymore-Peculiar School District

Stonegate Elementary School

Bridle Ridge Middle School

Raymore Peculiar South Middle School Ray-Pec High School

AMENITIES

Units:

Ceiling Fans

Self-Cleaning Oven

Refrigerator with Ice Maker

Built In Microwave

Washer & Dryer Included

Lawn Maintenance Provided

Private Patio or Balcony

Property:

24-Hour Emergency Maintenance

Computer Center/Library

Planned Activities

Fitness Center

Water, Sewer & Trash Included

CONNECT WITH US



@Wilhoit.Properties



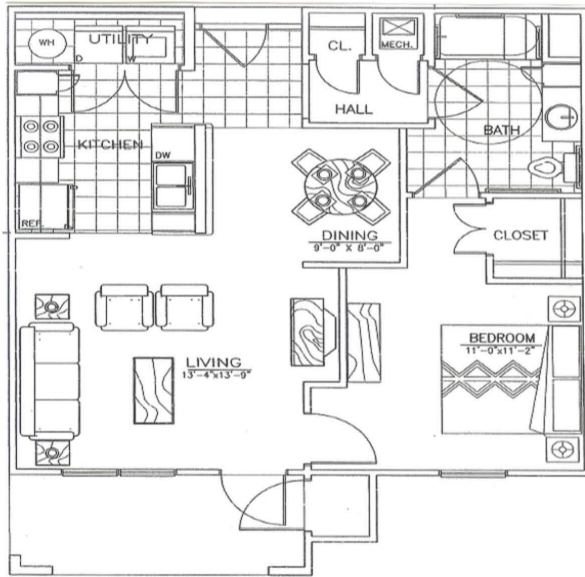
Wilhoit Properties, Inc.



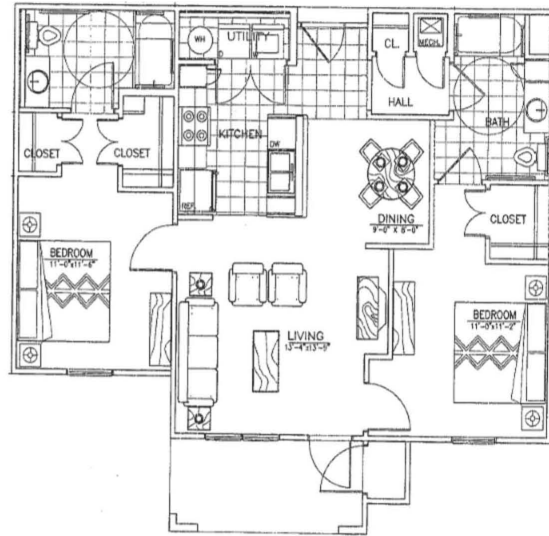
Wilhoit Properties

FLOOR PLANS

One Bedroom / One Bath
751 - 820 square feet



Two Bedroom / Two Bath
1023 square feet



OWNERSHIP & PARTNERS

Developer



Property Manager



Construction Management



Other Partners:

MO Housing Development Corporation, Raymond James Tax Credit Funds

CREDIT CARD PAYMENTS

The following credit cards are accepted forms of rent payment in the resident portal.

