

FAMILY

MISSOURI

SPRINGFIELD

SOUTHWEST

Griffith Commons

300 Griffith Commons Drive, Winston-Salem, NC 27103

Office: 336.760.1802 | **Fax:** 336.760.9021

Email: griffithcommons@wilhoitproperties.com



OVERVIEW

Home Type: Apartments

Bedrooms: 1–3

Bathrooms: 1–2

Other: No Garage

Size: 668–1151 ft²

Built In: 1999

Property Description

Welcome to Griffith Commons in Winston-Salem, a retreat you can call home. Your "at home" community is located off Hanes Mall Boulevard with easy access to shopping and restaurants. Enjoy bbq/picnic area, sparkling resort style pool, playground and the convenience of the professional staff. The apartment homes participate in The Housing Choice Voucher Program designed to maintain affordable housing for residents.

AMENITIES

Parking
Pool
Clubhouse
Laundry
Picnic Area

Schools

District: Winston-Salem/Forsyth County
Ward Elementary
Clemmons Middle School
Parkland High School

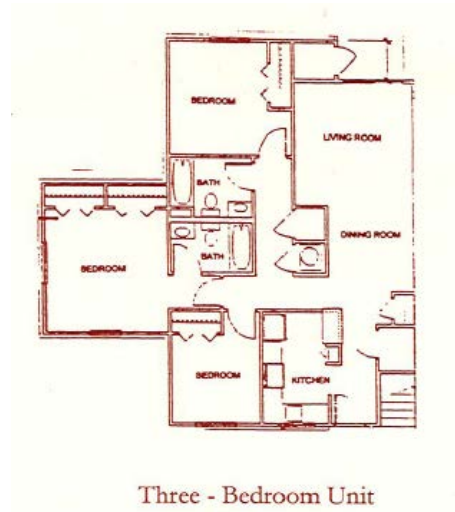
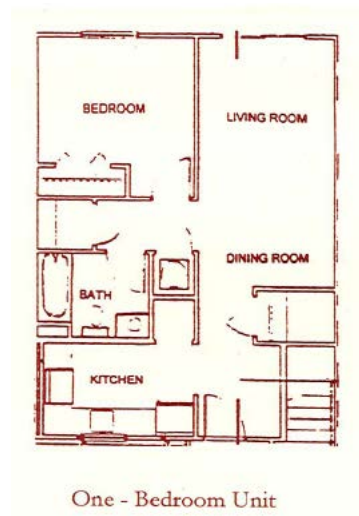
CONNECT WITH US

 @WilhoitProperties

 Wilhoit Properties, Inc.

 Wilhoit Properties

FLOOR PLANS



OWNERSHIP & PARTNERS

Property Manager



CREDIT CARD PAYMENTS

The following credit cards are accepted forms of Rent Payment but are ONLY processed in person at Property Offices.

