

FAMILY

OKLAHOMA

SHAWNEE

CENTRAL

## Shawnee Park Apartments

14201 Transportation Parkway, Shawnee, OK 74804

Office: 405.395.2576 | Fax: 405.395.2245

Email: shawneepark@wilhoitproperties.com



### OVERVIEW

**Home Type:** Apartments

**Bedrooms:** 2–3

**Bathrooms:** 2

**Size:** 972–1131 ft<sup>2</sup>

**Built In:** 2017

#### Property Description

Newly developed, Shawnee Park offers spacious 2 & 3 bedroom apartment homes. Enjoy a playground, fun tot lot, picnic areas with grills, fitness center, storm shelter, library with computers, beautiful community room, basketball court, storm shelter and 24 hour emergency maintenance all for the convenience and use for our residents. Large open floor plans with fully equipped kitchens featuring a garbage disposal, dishwasher, refrigerator, stove/oven, ceiling fans and full-size washer/dryer in each town home. Beautifully located with easy highway access Shawnee Park is the perfect choice for your new affordable home.

#### Schools

**District:** North Rock Creek School District

### AMENITIES

#### Units:

Ceiling Fans  
Fully-Equipped Kitchens  
Generous Closet Space  
Washer & Dryer Connections  
Private Patio or Balcony

#### Property:

24-Hour Emergency Maintenance  
Fitness Center  
Clubhouse  
On-site Laundry  
Playground  
Tornado Shelter

### CONNECT WITH US

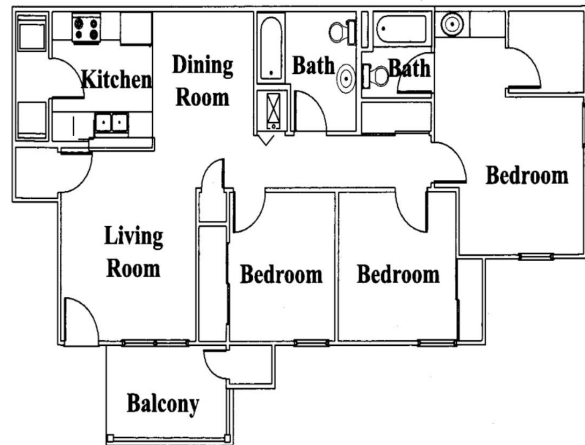
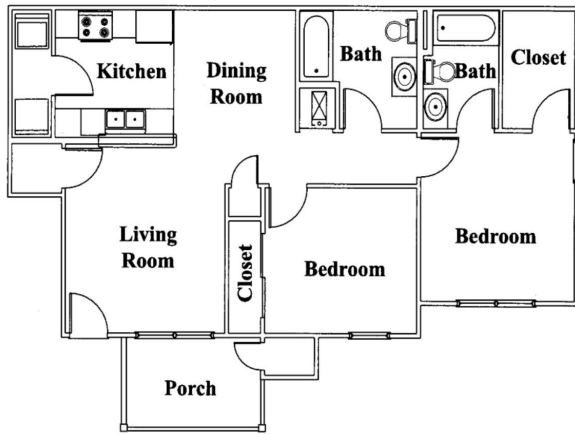


## FLOOR PLANS

---

2 Bedroom: 972 ft<sup>2</sup>

3 Bedroom: 1131 ft<sup>2</sup>



## OWNERSHIP & PARTNERS

---

Developer



Property Manager



Construction Management



### Other Partners:

Oklahoma Housing Finance Agency, Raymond James Tax Credit Funds,  
Bank of Oklahoma

## CREDIT CARD PAYMENTS

---

The following credit cards are accepted forms of Rent Payment in the resident portal.

