

FAMILY

TEXAS

PAMPA

SOUTH

Harvest Park Apartments

1011 E Harvester Avenue * Pampa, Texas 79065

Office: 806.486.1612 | Fax: 806.486.1615

Email: harvestpark@wilhoitproperties.com

The logo for Harvest Park Apartments consists of a white rectangular box containing the text "harvest park apartments" in a lowercase, sans-serif font. The box is centered over a background of several colorful, stylized trees in shades of green, purple, brown, and orange.

harvest park apartments

OVERVIEW

Home Type: Apartment Homes

Bedrooms: 2–3

Bathrooms: 2

Size: 990–1170 ft²

Built In: 2020

Property Description

Harvest Park offers spacious 2 & 3 bedroom apartment homes. Enjoy a cardio fitness center, business center with computers, community room, fun playscape, onsite management staff with 24-hour carefree emergency maintenance all for the convenience & enjoyment of our residents.

Large open floorplans featuring fully equipped kitchens with dishwasher, refrigerator, garbage disposal, stove/oven and microwave. Each home also has ceiling fans, full size washer/dryer and a private patio/balcony with extra storage.

Harvest Park is beautifully located in Pampa, Texas with easy access to great shopping, dining & entertainment, making it perfect choice for your new home.

AMENITIES

Units:

Fully-Equipped Kitchens

Ceiling Fans

Washer & Dryer Included

Patio/Balcony

Property:

24-Hour Emergency Maintenance

Playground/Playscape

Outdoor Picnic with Grills

Clubhouse

Business Center with Computers

Fitness Center

Schools

District: Pampa Independent School District

Austin Elementary

Pampa Junior

Pampa High

CONNECT WITH US

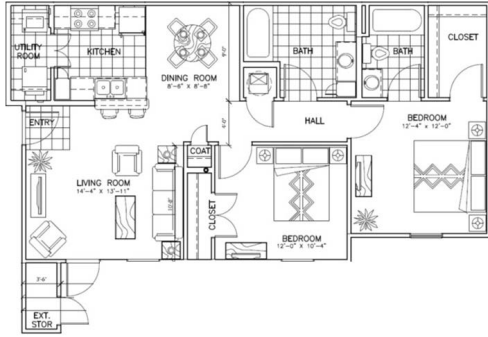
@Wilhoit.Properties

Wilhoit Properties, Inc.

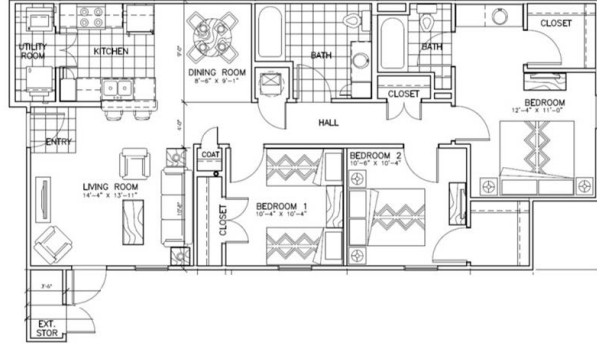
Wilhoit Properties

FLOOR PLANS

2 Bedroom: 990 ft²



3 Bedroom: 1170 ft²



OWNERSHIP & PARTNERS

Developer



Property Manager



Construction Management



Other Partners:

Raymond James Tax Credit Funds

Texas Department of Housing and Community Affairs

Springfield First Community Bank

CREDIT CARD PAYMENTS

The following credit cards are accepted forms of rent payment in the Residential Portal.

